

VOLUNTEER OPPORTUNITIES

The Stoney Creek Environment Committee invites you to come and experience nature in the city!

Advocacy
Bird Surveys
Botany Surveys
Community Events
Great Salmon Send Off (GSSO)
Data Entry
Educational Tours and Talks
Habitat Restoration
Juvenile Fish Trapping
Invasive Plant Removal
Invertebrate Surveys
Native Plant Restoration
Plant Rescues
Planning & Administration
Riparian Improvements
Restoration Projects—Creek/Forest
Social Media
Storm Drain Marking
Water Quality Monitoring
Writing/Editing

To get involved email info@scec.ca
Check our calendar at scec.ca

HOW TO FIND US

Roughly a 20 minute walk from Lougheed Town Centre Skytrain Station or take the #110 Metrotown bus. We meet at the Jennifer Atchison Environment Centre, 2730 Beaverbrook Crescent, directly behind Stoney Creek Community School.



View spawning salmon mid October to mid December

JOIN TODAY

Students \$10/year, Individual \$20, Family \$30

Name(s):

Phone:

Email:

Mail your cheque to:
Stoney Creek Environment Committee
PO Box 56522 Lougheed Mall Post Office
Burnaby, BC V3J 7W2



If you see a spill, muddy stream waters, or illegal dumping call City of Burnaby:

604 294 7460

604 294 7200 (after hours)

CONNECT WITH US

email: info@scec.ca



Twitter: @StoneyCreekSCEC



Facebook: facebook.com/myscec

STONEY CREEK BRINGS LIFE TO OUR COMMUNITY

EXPERIENCE IT. PROTECT IT.



STONEY CREEK IS ONE OF THE MOST IMPORTANT FISH BEARING STREAMS IN THE BRUNETTE RIVER WATERSHED.



PROTECT IT

RESTORING NATURE THROUGH SCIENCE AND COMMUNITY

The Stoney Creek Environment Committee (SCEC) was founded in October of 1995. We are a group of dedicated volunteers committed to protecting, preserving and enhancing Burnaby's urban forest and salmon bearing stream through various stream-keeping activities.

Members can access extensive training on how to conduct an assortment of stream habitat studies. The information collected is based on criteria set out by the Department of Fisheries and Oceans (DFO).

ORDINARY PEOPLE MAKING A DIFFERENCE

Achievements:

2004 salmon returned to spawn in Stoney Creek after a 50 year absence and a 10 year community effort

Why? Baffles were installed in a culvert, under Lougheed Highway enabling access to historic spawning grounds from the Lougheed Highway all the way up to North Road.

2012 construction of riffles and spawning habitat, south of Beaverbrook Drive, was completed in early September

Fish spawned in the new gravel in October of that same year.

Cost \$50,000

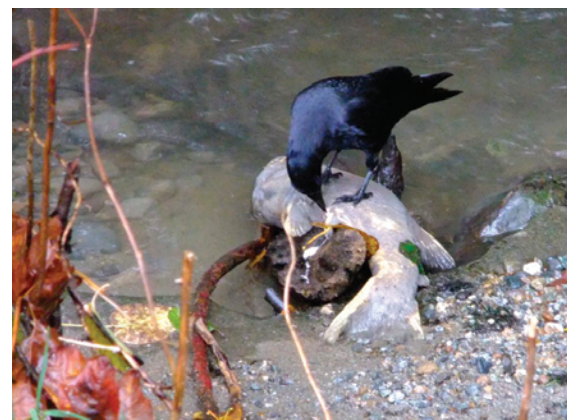
Project co-ordinated by SCEC

STONEY CREEK

- main creek originates from ground and storm water sources on the southeast slope of Burnaby Mountain—elevation 120m
- length of main stem about four kilometres
 - is vital habitat to Chum, Coho and Pink salmon, over 60 bird species, many mammals, insects and plants
- is both a spawning and rearing stream
- runs alongside the residential properties of Lougheed Town Center
- flows into the Brunette River

I joined the SCEC because I wanted a hands on approach to caring for the natural environment. — AMANDA JAVORSKY

I do it for the salmon. — ALAN JAMES



The life cycle continues—spawned salmon provide nutrients to the stream, food for birds and mammals, and fertilizer for the soil.

EXPERIENCE IT

- the thrill of watching spawning salmon fight their way upstream
- the challenge of working to minimize and reverse environmental damage to the creek and surrounding watershed
- the satisfaction of knowing you made a difference

Global change starts locally.